

# NEW | LED Directional Light

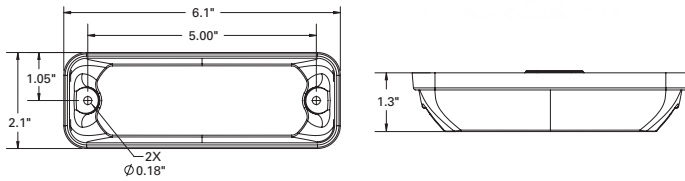
Class I LED Directional Light: Surface or Grommet Mount

▶▶ NOW AVAILABLE!

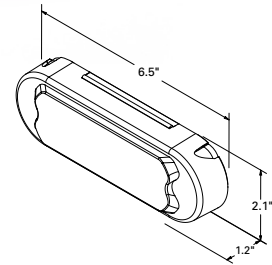
## High-Output LED Directional Light – Surface or Grommet Mount



7773



7783



### FEATURES AND BENEFITS

This Class I LED directional light is comprised of 20 high intensity LEDs with individual reflectors to provide truly outstanding light output. Electronics are fully encapsulated in a tough and clear polycarbonate base to provide protection against the elements and vibration. Units can be synchronized with multiple flash pattern configurations. Available in surface or grommet mount.

### PRODUCT SPECIFICATIONS

- SAE J595 Class I
- Tough, clear polycarbonate housing with encapsulated electronics
- 7 flash patterns
- Temperature Range: -22°F to +122°F (-30°C to +50°C)

PART #	COLOUR	VOLTAGE	AMPS	MOUNT
7773	AMBER	12-24	0.3	SURFACE
7783	AMBER	12-24	0.3	GROMMET



**LEARN MORE:**  
www.grote.com



230 Travail Road, Markham,  
Ontario, Canada L3S 3J1  
TEL: 800.268.5612  
US: 800.628.0809  
www.grote.com