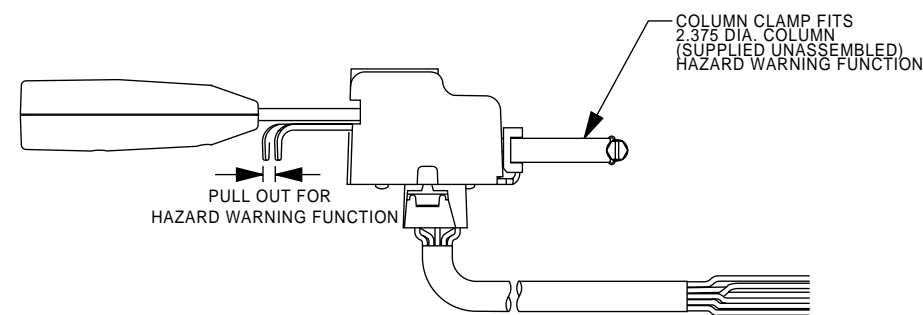


REV	DESCRIPTION	ENG APP'L	ECN NO. AND DATE
A	ISSUED	MHD	89-3723 09/13/89
B1	ROUND HANDLE GRIP WAS SQUARE		97-0730
B2	UPDATED TITLE BLOCK		11/18/97
LWP			

B1

INSTRUCTIONS FOR MODEL NUMBERS 48072 AND 48272. LESS BRAKE CIRCUIT (SEE REVERSE SIDE FOR WIRING INSTRUCTIONS WHEN BRAKE CIRCUIT IS REQUIRED)

THE **Grote** INDUSTRIES, LLC
2600 LANIER DRIVE
MADISON, INDIANA 47250



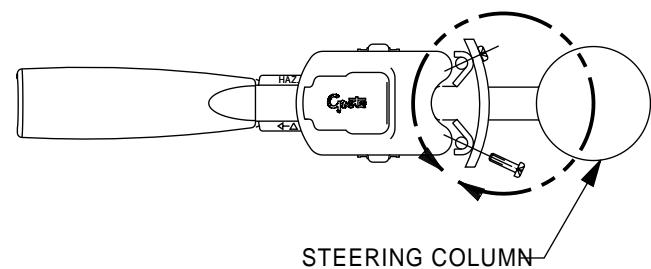
MOUNTING AND WIRING INSTRUCTIONS

NOTE: PLEASE READ ALL INSTRUCTIONS BEFORE INSTALLATION.

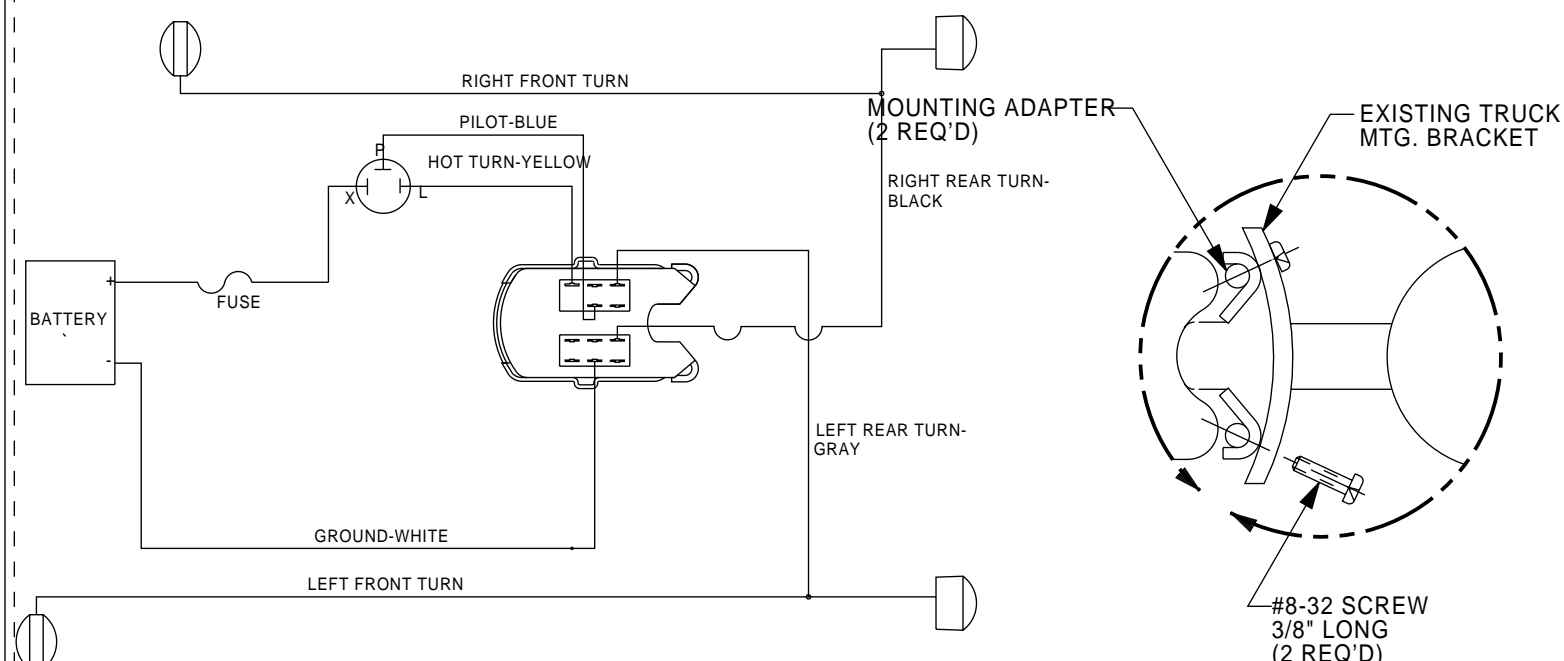
- 1) MOUNTING OF TURN SIGNAL SWITCH**
A) Mount switch to steering column with the tube clamp or mounting adapters which are provided. (see fig. #1)
- 2) WIRING THE TURN SIGNAL SWITCH HARNESS**
A) Slide loom provided over wires from connector before connection to vehicle wiring.
B) Connect the black wire from the harness to the right turn lamps.
C) Connect the gray wire from the harness to the left turn lamps.
D) Connect the white wire to a good ground on the vehicle.
E) Connect the yellow wire from the switch to the flasher terminal marked "L".
F) Connect the blue wire from the switch to the flasher terminal marked "P".
G) Connect a hot wire from the battery to the flasher terminal marked "X".
H) Plug connector on switch harness to terminals on the bottom of the switch.
NOTE: ORIENTATION OF CONNECTOR IS CRITICAL.

- B) For pilot bulb replacement on 12 volt systems use a no. 53 bulb.
- C) To replace the pilot light bulb place the handle in neutral position and remove the cap by placing fingers on each side of switch cap and gently prying outward while lifting at the same time. Remove snap on bulb shield and replace bulb. Replace bulb shield making sure index tab at back is located in the die-cast handle retainer. Switch cap will snap in place by gently pushing it down over the switch with the handle in neutral position.
- D) To operate the hazard warning function pull the chrome hazard handle outward. To cancel the hazard warning function move the turn handle to the left or right turn position.
- E) Hot wires from battery to flasher must be fused for component protection in case of a dead short. (Use a fuse rated at 20amps max.)

4) WIRING INSTRUCTIONS ARE BASED ON THE HARNESS SUPPLIED WITH THE 48072 SWITCH OR THE 69680 HARNESS. (WIRES NOT USED ON THE FOUR WIRE SYSTEM CAN BE CUT OFF).



STEERING COLUMN



WIRING DIAGRAM

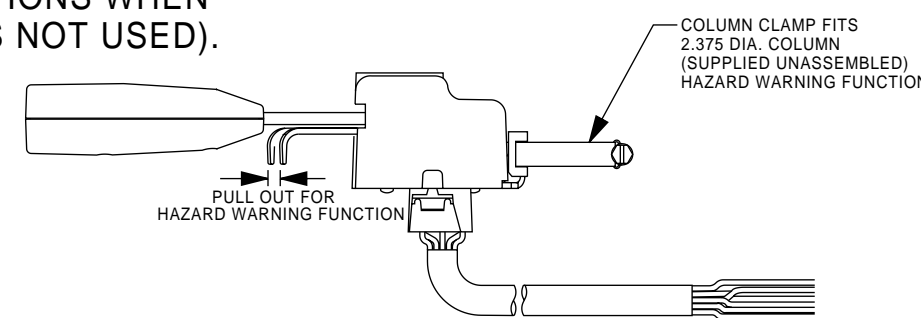
NOTE: PLACE INSERTS IN MTG. BRACKET AND DRIVE TWO SCREWS INTO INSERTS AS SHOWN.

FIGURE #1

B1

INSTRUCTIONS FOR MODEL NO. 48072 AND 48272 WHEN BRAKE CIRCUIT IS USED. (SEE REVERSE SIDE FOR WIRING INSTRUCTIONS WHEN BRAKE CIRCUIT IS NOT USED).

THE **Grote** INDUSTRIES, LLC
2600 LANIER DRIVE
MADISON, INDIANA 47250



MOUNTING AND WIRING INSTRUCTIONS

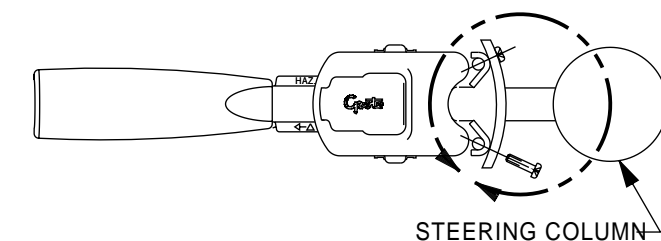
NOTE: PLEASE READ ALL INSTRUCTIONS BEFORE INSTALLATION.

- 1) MOUNTING OF TURN SIGNAL SWITCH**
A) Mount switch to steering column with the tube clamp or mounting adapters which are provided. (see fig. #1)
- 2) WIRING THE TURN SIGNAL SWITCH HARNESS**
A) Slide loom provided over wires from connector before connection to vehicle wiring.
B) Connect the red wire from the harness to the right front turn lamp.
C) Connect the green wire from the harness to the left front turn lamp.
D) Connect the black wire from harness to the right rear stop/turn lamp.
E) Connect the gray wire from the harness to left rear stop/turn lamp.
F) Connect the white wire to a good ground on the vehicle.
G) Connect the gray wire with black stripe to the brake switch terminal opposite the hot wire from the battery.
H) Connect the yellow wire from switch to the flasher terminal marked "L".
I) Connect the blue wire from the switch to the flasher terminal marked "P".
J) Connect a hot wire from the battery to the flasher terminal marked "X".
K) Plug connector on harness to terminals on bottom of switch.
NOTE: ORIENTATION OF CONNECTOR IS CRITICAL.

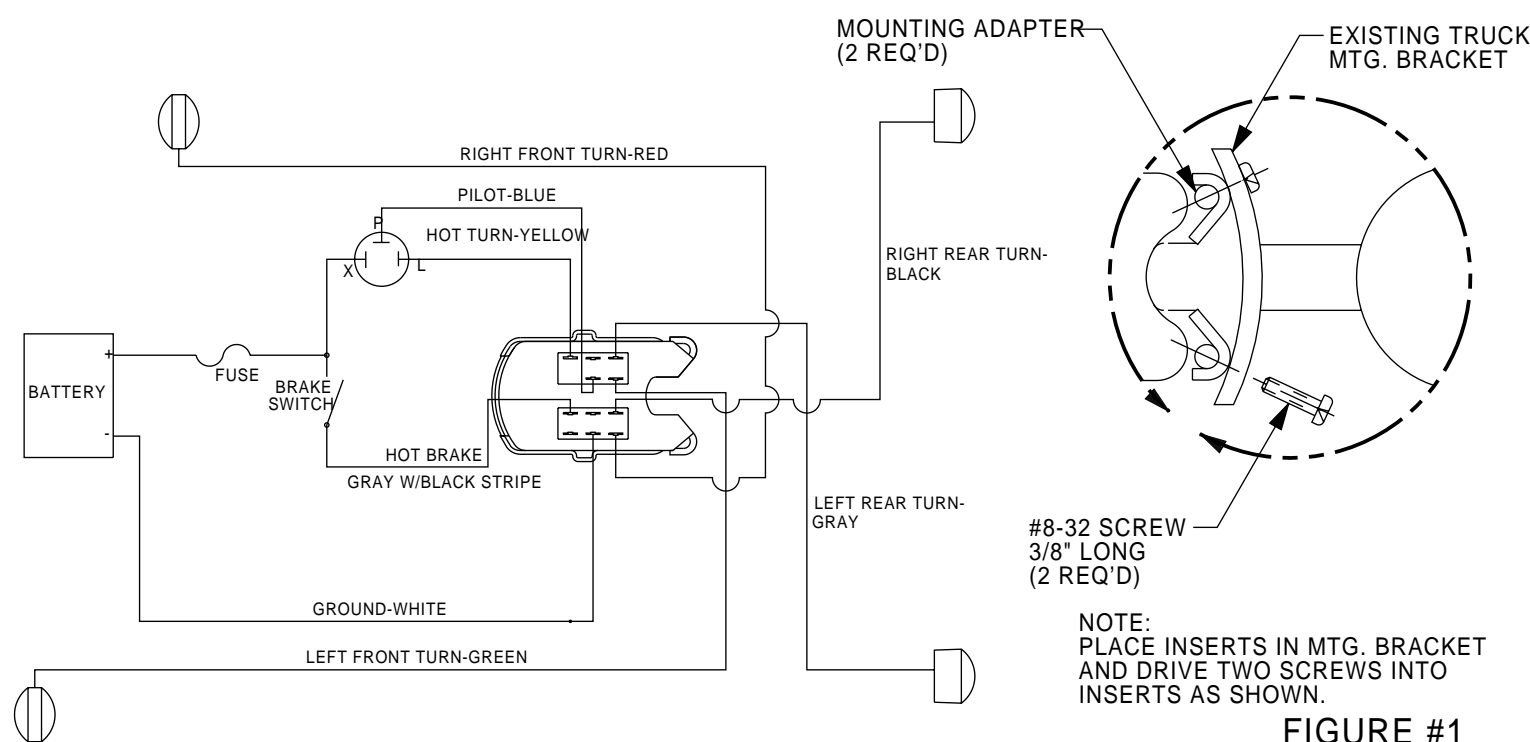
- B) The flasher and flasher connector are not supplied with the switch. They may be purchased from GROTE MFG. CO., flasher connector # 16-9009-01 and terminal # 31-5030-01 (3 req'd). Use GROTE flasher # 44540 (25 amp) on 12 volt, 3 terminal systems. For maximum system performance use GROTE # 44670 3 terminal flasher.
- C) For pilot bulb replacement on 12 volt systems use a # 53 bulb.
- D) To replace the pilot light bulb place the handle in neutral position and remove the cap by placing fingers on each side of switch cap and gently prying outward while lifting at the same time. Remove snap on bulb shield and replace bulb. Replace bulb shield making sure index tab at back is located in the die-cast handle retainer. Switch cap will snap in place by gently pushing it down over the switch with the handle in neutral position.
- E) To operate the hazard warning function pull the chrome hazard handle outward. To cancel the hazard warning function move the turn handle to the left or right turn position.
- F) Hot wires from battery to flasher and brake switch must be fused for component protection in case of a dead short. (Use a fuse rated at 20amps max.)

- 3) NOTES**
A) If the vehicle has the turn indicator lights on the dash, the blue pilot wire will not be used. The switch pilot light must be used with a (3) prong flasher.

4) WIRING INSTRUCTIONS ARE BASED ON THE HARNESS SUPPLIED WITH THE 48072 SWITCH OR THE 69680 HARNESS.



STEERING COLUMN



WIRING DIAGRAM

NOTE: PLACE INSERTS IN MTG. BRACKET AND DRIVE TWO SCREWS INTO INSERTS AS SHOWN.

FIGURE #1

FORM NO. 56-8001-61 REV. "B"

TRADE SECRET
DO NOT REPRODUCE, USE OR DISCLOSE THIS DOCUMENT OR THE INFORMATION HEREIN.
COPYRIGHT (UNPUBLISHED) GROTE INDUSTRIES, LLC

GCC DENOTES GROTE CONTROL CHARACTERISTIC **THIRD ANGLE PROJECTION**

DR. BY: C. O'NEAL	SCALE: NONE	UNITS: IN
DATE: 09/13/89	CK'D BY:	
MATERIAL NO.	N/A	

MAT'L DESCRIPTION N/A

TITLE **INSTRUCTION SHEET**

Grote GROTE INDUSTRIES, LLC
MADISON, INDIANA U.S.A.

SIZE C	PART/DWG NO. 56-8001-61 B	REV. B2	SHT # 1 OF 1
---------------	----------------------------------	----------------	---------------------

SYSTEM/REV. MEDUSA 14	PROJECT #: NO
	3D DATA: NO

B1

B1

B2