

**06**

---

**XTL®**  
**FOR APPLICATIONS**  
**AND CREATIVITY**

---

***XTL® POUR APPLICATIONS***  
***ET CRÉATIVITÉ***

---

***XTL® PARA APLICACIONES***  
***Y CREATIVIDAD***

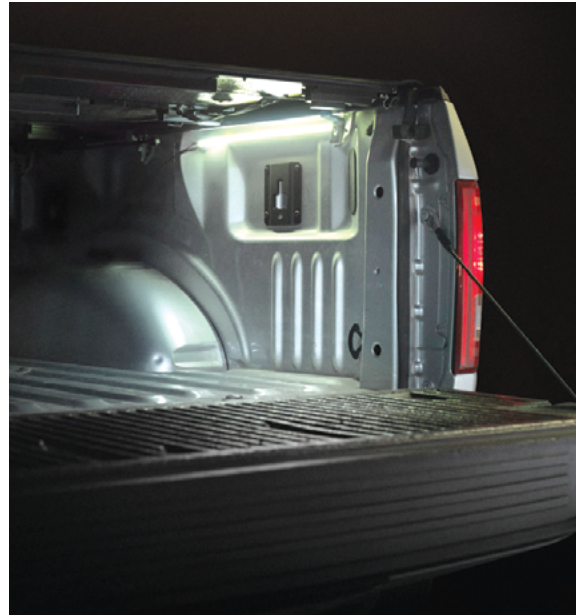
---



## XTL® TRUCK BUNDLES

### FEATURES & BENEFITS

- Use the XTL® Xtreme Truck Bundle to light up your pick-up truck, SUV, RV, utility trailer—any place where light is needed and power is not readily available
- Connected to a battery box, XTL® will provide light for at least 35 hours on a fresh set of batteries
- Expandable kit allows the user to connect to 12V power and add (3) strips of different lengths and light output
- Grote® UBS wire harness uses sealed connections and includes a professional installation kit



**VISIT [GROTE.COM/XTL](http://GROTE.COM/XTL)  
 FOR COMPLETE PRODUCT LINE INFORMATION**



## ***XTL® FOR ATV AND UTV***



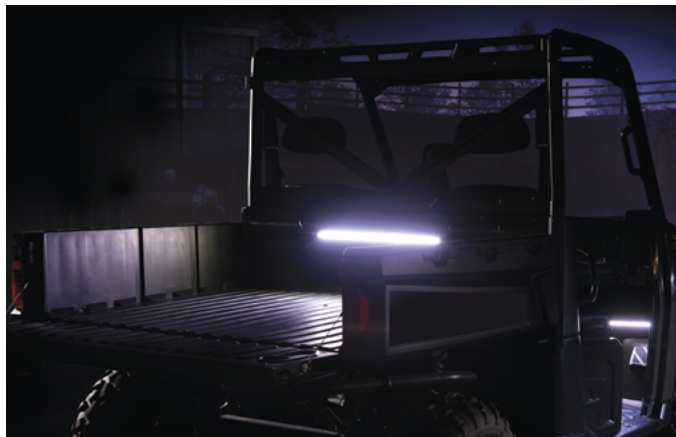
### ***XTL® REAR VISIBILITY KIT***

Add an additional layer of visibility with the durable, flexible XTL® strip on your UTV or Side by Side. This XTL® kit features the bright, red strip, OEM mounting tape and wire harness.



### ***XTL® TASK LIGHT KIT***

Off-road or on the jobsite, easy-to-install and ultra-durable Grote® XTL® enables you to put light anywhere you need it.

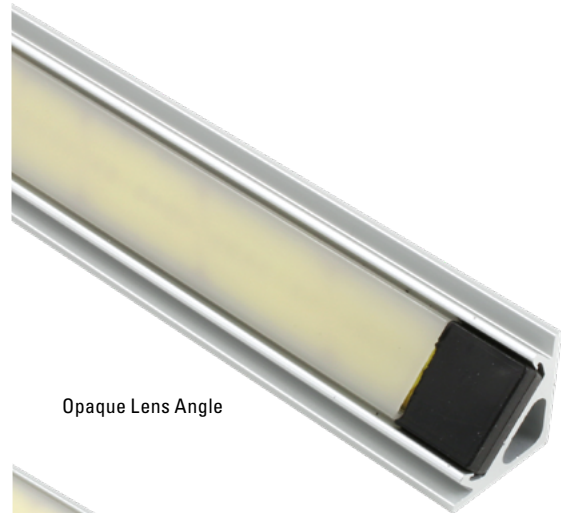


## XTL® EXTRUSIONS



### FEATURES & BENEFITS

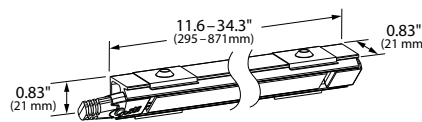
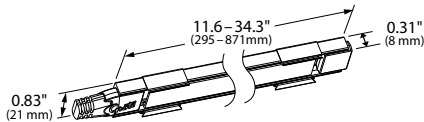
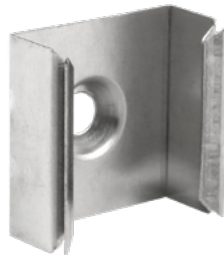
- Provides ability to install extrusion at 90° angle to be able to aim light at a 45° angle
- Opaque lens provides a smooth, non-glaring light output
- Extrusions protect XTL® Strip Lighting from impacts
- Snap-in or slide-in lens
- Mounting lips supplied separately in hardware bag
- Recommendation: use 2 clips on 288mm extrusion, 3 clips on 488mm extrusion, 4 clips on 576mm extrusion, and 5 clips on 864mm extrusion
- 18-8 stainless-steel Phillips flathead screws required for installation (not included)



Opaque Lens Angle



Opaque Lens Flat



**VISIT [GROTE.COM/XTL](http://GROTE.COM/XTL)  
 FOR COMPLETE PRODUCT LINE INFORMATION**

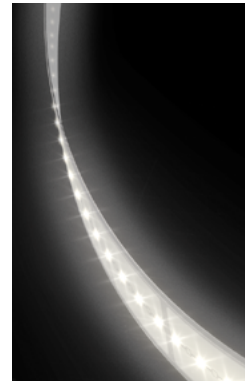
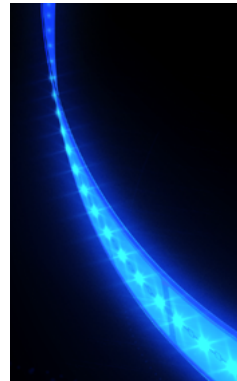
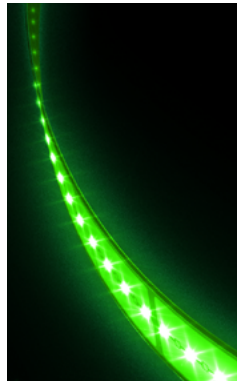
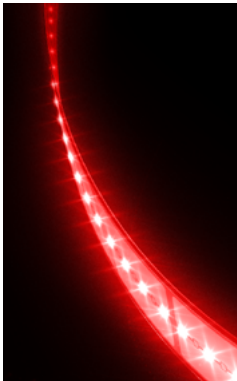


## XTL® COLORED AND WHITE STRIPS



### FEATURES & BENEFITS

- Made in the U.S.A.
- Long-life LED performance and reliability
- Strips are less than .5 mm thick
- Lightweight
- Flexible – can bend to a 0.5" radius and conform to compound curves
- Concussion- and abrasion-resistant
- 3-year warranty
- Comes with 3M® VHB tape for long-term (10-year-plus) adhesion



3M® is a registered trademark of 3M Company;

All product and company names are trademarks™ or registered® trademarks of their respective holders. Use of them does not imply any affiliation with or endorsement by them.



**REVOLUTIONARY LED AUXILIARY VEHICLE LIGHTING**

Create special lighting effects for virtually any vehicle with XTL®, a family of flexible, lightweight, ultra-thin LED lighting strips. Available in a range of colors, durable XTL® strips can twist and conform to most surfaces to provide direct or indirect light.



**VISIT [GROTE.COM/XTL](http://GROTE.COM/XTL)  
 FOR COMPLETE PRODUCT LINE INFORMATION**