

EZ CLAW[®] SUSPENSION SYSTEM FROM GROTE

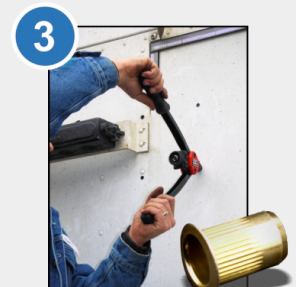
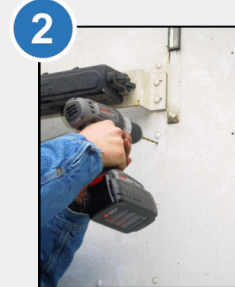
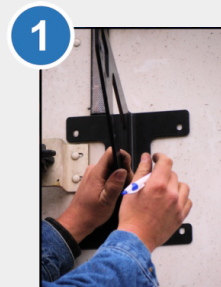


**CONNECT
& PROTECT**

STEP-BY-STEP INSTRUCTIONS



There are a variety of mounting options for the EZ Claw Truck system. You may find you already have a bracket or location that will only require drilling two 3/8" holes at a 45 degree angle.

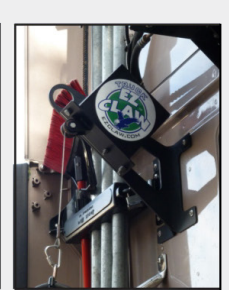
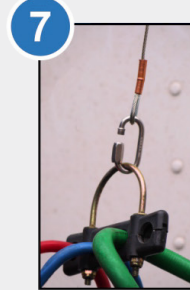
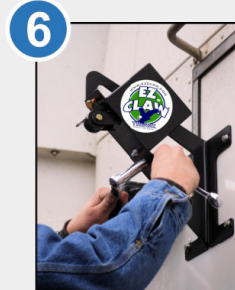
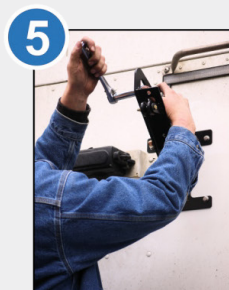


- Select a mounting location vertically as high as possible to the left (driver's side) that will allow tying into a rib and without interference.

- It may be necessary to drill out one rivet to use as a mounting hole and to ensure the bracket is completely flush.
- Mark all four holes.

- Using a 3/16" bit carefully drill pilot holes in the center of each mark (being careful not to plunge into insulation, wires, etc.).

- Drill out the pilot holes using a 25/64" nutserts bit.
- Install the nutserts using a nutsert tool.



- Mount the **EZ Claw Truck** bracket using 1/4" bolts with flat washers and lock washers.

- Mount the **EZ Claw** bracket using the supplied 3/8" bolts and lock nuts.

- Install **EZ Claw** tensioner cover using supplied 3/8" bolts and lock nuts

- Using the supplied shackle, attach **EZ Claw** cable to the hose and cable assembly.
- Tighten nut on link.

EZ-FIND

SCAN CODE FOR MORE INFO
BALAYER LE CODE POUR DE PLUS
AMPLES RENSEIGNEMENTS
ESCANEAR CÓDIGO PARA
VER MÁS INFORMACIÓN



**FOR MORE INFORMATION
VISIT OUR WEBSITE.
GROTE'S GOT IT!**

Grote

230 Travail Rd, Markham,
Ontario, Canada L3S 3J1
Tel: 800.268.5612
US: 800.628.0809
www.grote.com

CONNECT & PROTECT