

TRAILER CONNECTORS

CONNECTEURS DE REMORQUES • CONEXIÓN DE TRAILERS Y REMOLQUES

HEAVY DUTY 7-WAY CONNECTORS • CONNECTEURS ROBUSTES À 7 VOIES • CONECTORES DE 7 HILOS REFORZADOS



Grote's Trailer Connectors and Communication products insure sufficient power is delivered to the entire vehicles lighting and safety system.

Heavy Duty 7-Way Connectors

No.	Color	Circuits	Recommended Wire Gauge
1	White	Ground Return	8 ga
2	Black	Clearance, Side Marker and Identification Lamps	12 ga
3	Yellow	Left Turn Signal and Hazard Signal	12 ga
4	Red	Stop Lamps and Anti-Lock Devices	10 ga
5	Green	Right Turn Signal and Hazard Signal	12 ga
6	Brown	Tail, Rear Clearance, Marker and License Plate Lamps	12 ga
7	Blue	Auxiliary Circuit/ABS	10 ga

- Die-cast housing for superior corrosion resistance
- Solid brass pin terminals for best conductivity
- Terminals accept 16-10 gauge wires; 8 gauge ground wire
- 40 amp. @ 6-28V DC
- 2, 1/2" mounting holes
- Plated steel cable guard prevents cable chafing
- Circuit identification on the back of the plug & socket
- Meets and exceeds SAE J560
- Stainless steel spring

Plug #	Material	Description	Part #
7	Zinc Die-Cast	Plug only - N.A.	82-1007
7	Zinc Die-Cast	Plug only	82-1001
7	Nylon	Plug only - N.A.	82-2140
7	Zinc Die-Cast	Plug with guard - N.A.	82-1037
7	Zinc Die-Cast	Plug with guard	82-1019
7	Stainless Steel	Guard only	82-2141
7	Nylon	Plug Interior – enclosed	82-1003

Socket #	Material	Terminals	Part #
7	Zinc Die-Cast	Exposed, solid pin - N.A.	82-1005
7	Zinc Die-Cast	Exposed, split pin - N.A.	82-1047
7	Zinc Die-Cast	Enclosed, split pin	82-1002
7	Nylon	Enclosed, solid pin - N.A.	82-2145
7	Zinc Die-Cast	Enclosed, split pin with 20 amp. circuit breaker	82-0850

N.A. = North American



82-1001



82-2140



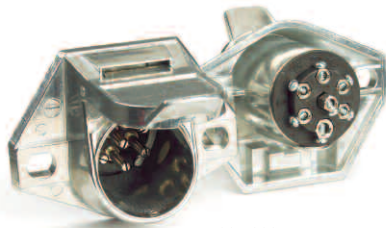
82-1037



82-2141



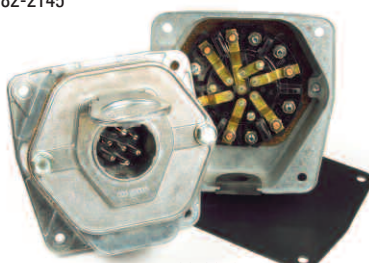
82-1003



82-1002



82-2145

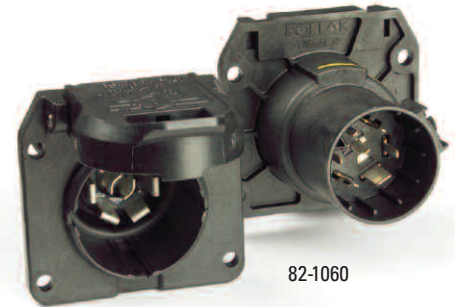


82-0850

7 Way R.V. Connectors

No.	Color	Circuits	Recommended Wire Gauge
1	White	Ground Return	10 ga
2	Blue	Electric Brake	12 ga
3	Green	Tail, License, Running Lights	14 ga
4	Black	Battery Charge	10 ga
5	Red	Stop and Left Hand Turn Signal	14 ga
6	Brown	Stop and Right Hand Turn Signal	14 ga
7	Yellow	Auxiliary Circuit	14 ga

- Made of lightweight, high impact nylon with a stainless steel spring and rubber gasket
- Socket lid has a slot for proper drainage, tin plated copper alloy terminals
- 82-1060 fits Ford style and universal mount brackets (Grote part # 43402)



82-1060

Plug/Socket #	Material	Description	Part #
7	Nylon	R.V. Socket Only - N.A.	82-1060
7	Nylon	R.V. Socket Only	82-1058
7	Nylon	R.V. Plug Only	82-1056
7	Nylon	R.V. Plug & Socket Kit (includes 82-1056 & 82-1058)	82-1050



82-1056

82-1058

Twist-in and Lock Connector

- Easy twist-in and lock assembly for factory installed brackets and hitches
- Fits GM and Nissan trucks and SUV's

Plug #	Material	Description	Part #
7	Nylon	Twist-In & Lock Socket - N.A.	82-1059



82-1059

Combination 7 Way & 4 Pole Sockets

- Combines an R.V. 7 way and 4 pole flat socket connection into one part (not to be used simultaneously)
- Made of lightweight, high impact nylon material for superior corrosion resistance
- Easy snap-in assembly designed for truck and sport utility vehicles and when hauling multiple trailers
- Eliminates the need for an adapter
- Will plug into any Ford or GM vehicle built after 2001 (selected Nissan models 2004+)
- Mounting bracket included

Plug #	Material	Description	Part #
7	Nylon	7-Way R.V. and 4 pole flat - N.A.	82-1055



82-1055

N.A. = North American

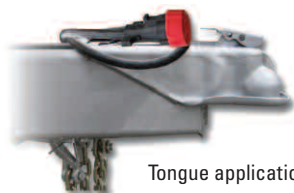
TRAILER CONNECTORS

CONNECTEURS DE REMORQUES • CONEXIÓN DE TRAILERS Y REMOLQUES

R.V. CONNECTOR ADAPTERS • ADAPTATEURS DE CONNECTEUR POUR VR
• ADAPTADORES DE CONECTORES PARA VEHÍCULOS RECREATIVOS



Bumper application



Tongue application

7 Way Plug and Socket Protectors



- Designed to reduce 7-way electrical plug connector malfunction or damage caused by corrosion, dust, moisture and debris
- RV, Horse, Boat and Utility Trailer Applications
- Two piece product for application on the trailer and towing vehicle
- Fits most 7 way connectors
- Made in North America

1267

T Connector Adapter

- Adapter for 5th wheel & bumper mount sockets
- Quickly installs a second R.V. socket; plug and play into the existing OEM harness
- Fits GM and Ford trucks and SUV's; fits Chrysler trucks and SUV's with 82-1062 adapter
- Mates with Grote 7 Way socket # 82-1060 & 82-1055 (page 47)
- Installation instructions included

Plug #	Material	Description	Part #
7	Nylon	7 Way R.V. 5th Wheel T-Connector - N.A.	82-1063

Rectangular-to-Round Harness Adapter

- Adapter for OEM harnesses
- Mates with Grote socket # 82-1060, 82-1055, 82-1059 (page 47) and T-Connector # 82-1063 (above)

Plug #	Material	Description	Part #
7	Nylon	Harness Adapter - N.A.	82-1062

Harness Extension Adapter

- Adapter mates with socket # 82-1060, 82-1055 (page 47)
- 4' harness extension plug into the socket and splices into an existing OEM harness
- Installation hardware included

Plug #	Material	Description	Part #
7	Nylon	4' Harness Extension - N.A.	82-1061

N.A. = North American



82-1063



82-1062



82-1061

Step-Down R.V. Adapters

- Provides 6 & 7 pole trailer plug to allow 4,5 and 6 pole conversion
- Made of lightweight, nylon material for superior corrosion resistance
- Simply plug into the matching socket and your ready to go
- Ideal for boat trailers, campers and utility vehicles
- Mounting brackets also available – see below

Plug #	Material	Description	Part #
7	Nylon	7 Way R.V. to 4 Pole Flat	82-2146
7	Nylon	7 Way R.V. to 5 Pole Flat	82-2148
7	Nylon	7 Way R.V. to 6 Pole Round, Centre Pin - Brake	NEW 82-2149
7	Nylon	7 Way R.V. to 6 Pole Round, Centre Pin - Auxiliary	NEW 82-2154
6	Nylon	6 Pole Round to 4 Pole Flat	82-2147



82-2146



82-2148



82-2149



82-2147

R.V. Power Outlet Adapter, 12 Volt

- Designed to adapt the trailer connector at the rear of the vehicle to a 12V Plug (20 amp max.) or AC-DC converter (110 Volt plug outlet)
- Made of lightweight, nylon material for superior corrosion resistance
- Terminals are tin plated copper alloy for higher conductivity and less resistance
- Fits OEM 7 Way R.V. style sockets 82-1055, 82-1058, 82-1059 & 82-1060 and can be easily stored in a glove box
- Provides a power source for T.V.'s, Cell Phones, Electric Coolers or 12V power tools



82-2153

Plug #	Material	Description	Part #
7	Nylon	12 Volt Adapter, AC-DC Converter	82-2153



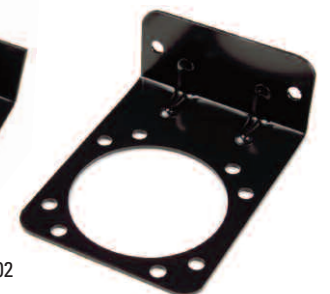
Mounting Brackets

- Can accommodate from 4 pole up to 9 pole socket requirements
- Made of anti-corrosive steel, painted black

Plug #	Material	Description	Part #
4, 5, 6	Steel	4, 5 and 6 pole socket bracket	43942
7, 9	Steel	7 and 9 pole socket bracket	43402



43942



43402

Plug and Socket Boot

Plug / Socket #	Description	Part #
7	Plug Boot - complete protection - N.A.	82-2142
7	Socket Boot - complete protection - N.A.	82-2144



82-2142



82-2144

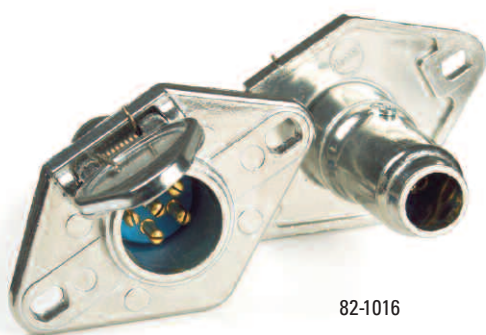
TRAILER CONNECTORS

CONNECTEURS DE REMORQUES • CONEXIÓN DE TRAILERS Y REMOLQUES

HEAVY DUTY 6-WAY CONNECTORS • CONNECTEURS ROBUSTES À 6 VOIES • CONECTORES DE 6 HILOS REFORZADOS

Heavy Duty 6-Way Connectors

No.	Color	Circuits
1	White	Ground Return
2	Brown	Tail Lights
3	Yellow	Left Turn
4	Red	Stop
5	Green	Right Turn
6	Blue	Auxiliary Circuit



- Die-cast housing for superior corrosion resistance
- Brass pin terminals for best conductivity
- Terminals accept up to #12 gauge wires
- 2, 1/2" mounting holes
- Replaceable plug & socket interiors help reduce maintenance costs
- Plated steel cable guard prevents cable chafing
- Circuit identification on the back of the plug & socket

Plug #	Material	Description	Part #
6	Zinc Die-Cast	Plug only	82-1011
6	Zinc Die-Cast	Plug with guard - N.A.	82-2006
6	Zinc Die-Cast	Plug with guard	82-1010

Socket #	Material	Terminals	Part #
6	Zinc Die-Cast	Exposed, split pin - N.A.	82-1015
6	Zinc Die-Cast	Enclosed, split pin	82-1016
6	Zinc Die-Cast	Enclosed, split pin - N.A.	82-4006

Plug & Socket Kit	Material	Terminals	Part #
6	Zinc Die-Cast	Enclosed, split pin (includes 82-1011 & 82-1016)	82-1018

Socket Boot

Plug/Socket #	Description	Part #
6	Socket Boot - Complete protection - N.A.	82-1012

Heavy Duty 4-Way Connectors

No.	Color	Circuits
1	White	Ground Return
2	Green	Right Turns and Brake Lights
3	Yellow or Red	Left Turn and Brake Lights
4	Brown	Tail Lights

- Die-cast housing for corrosion resistance
- Brass pin terminals for best conductivity
- 2, 1/4" mounting holes

Plug #	Material	Description	Part #
4	Zinc Die-Cast	Plug with spring	NEW 82-1022
4	Zinc Die-Cast	Plug	82-1021
4	Stainless Steel	Spring	NEW 82-1023

Socket #	Material	Terminals	Part #
4	Zinc Die-Cast	Enclosed, split pin	82-1020

Plug & Socket Kit	Material	Terminals	Part #
4	Zinc Die-Cast	Enclosed, split pin (includes 82-1020 & 82-1021)	82-1040

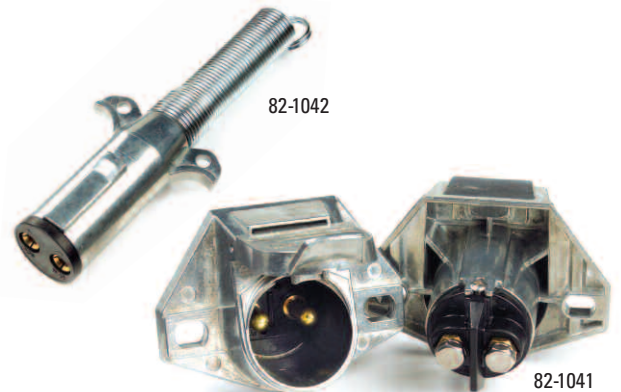


Heavy Duty 2-Way Connectors

- Ideal for lift-gate applications
- Accepts 4 gauge cables
- 2, 1/4" mounting holes
- 200 amp; Heavy duty die-cast construction

NEW

Plug #	Material	Description	Part #
2	Zinc Die-Cast	Plug with spring	82-1042
2	Zinc Die-Cast	Socket	82-1041
2	-	Socket Boot	82-2144



Heavy Duty 1-Way Connectors

- Ideal for power applications on trucks, utility, agricultural equipment and winches
- Continuous duty capacity of 300 amps
- Heavy duty, corrosion resistant, zinc die cast housing
- 2, 1/4" mounting holes
- Provides power for auxiliary equipment from the battery

Plug #	Material	Description	Part #
1	Zinc Die-Cast	Plug	82-0852

Socket #	Material	Terminals	Part #
1	Zinc Die-Cast	Enclosed, with Boot	82-0851

Plug & Socket Kit	Material	Terminals	Part #
1	Zinc Die-Cast	Enclosed	82-0950

(includes 82-0852 & 82-0851)



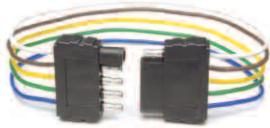
TRAILER CONNECTORS

CONNECTEURS DE REMORQUES • CONEXIÓN DE TRAILERS Y REMOLQUES

TRAILER CONNECTORS • CONNECTEURS DE REMORQUES • CONEXIÓN DE TRAILERS Y REMOLQUES



82-1028



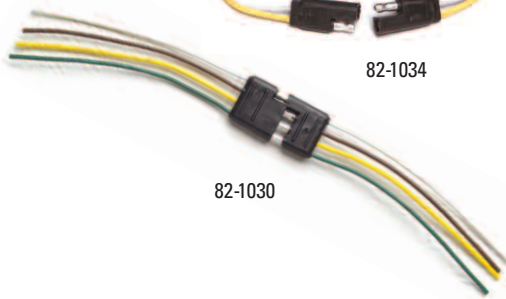
82-1029



82-1033



82-1034



82-1030



68420



68540-5

- Automotive, marine, recreational and truck applications
- PVC wire
- Operating temperature 105°C (221°F)
- Weather resistant molded head
- Male = vehicle end
- Female = trailer end



Plug #	Gauge	Connector Head	Wire Colors	Connector End	Part #
6	16	Square	White, Yellow, Brown, Green, Blue, Red	Male & Female	82-1028
5	16	Flat	White, Yellow, Brown, Green, Blue	Male & Female	82-1029
4	18	Square	White, Yellow, Brown, Green	Male & Female	82-1036
4	16	Flat	White, Yellow, Brown, Green	Male & Female	82-1030
4	16	Flat	White, Yellow, Brown, Green	Female - blunt cut	82-1031
4	16	Flat	White, Yellow, Brown, Green	Male - blunt cut	82-1032
3	16	Flat	White, Yellow, Brown	Male & Female	82-1033
2	16	Flat	White, Yellow	Male & Female	82-1034
2	10	Flat	White, Yellow	Male & Female	82-1035

25' Split Y Harness

Plug #	Gauge	Connector Head	Wire Colors	Connector End	Part #
4	18	Flat	White, Yellow, Brown, Green	Male	68420

Boat & Utility Trailer Wiring Kit

- For durable rewiring of a boat, bike, snowmobile or utility trailer
- Comes complete with a 25' trailer harness, 4' trunk harness and 6 18-14 GA tap connectors
- Retail packaged

Plug #	Gauge	Connector Head	Wire Colors	Connector End	Part #
4	18	Flat	White, Yellow, Brown, Green	Male & Female	68540-5

Seven Terminal Junction Box

- Corrosion resistant molded cover and housing
- Two-bolt mounting 7 3/8" (18.73) centre to centre
- Access slot grommets included, four open-four closed
- 7, #10-32 studs

82-1000



Dri-Seal Circuit Box

- Entrances stay dry by using the new "push-in" choke seals and threaded fittings – comes with 4 choke seals
- 18 brass circuit studs and full hardware; entry from 4 sides
- All components are corrosion resistant
- Numbered label for fast circuit I.D.
- No tools - easy access by 4 wing-nut fasteners that are retained in the cover
- Ample area for wire and cable – 1 cable entrance fitting
- North American

351044

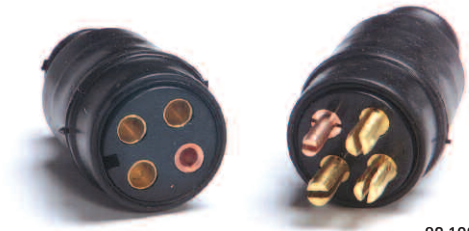


Molded Connector Assemblies

- PVC sleeve provides ultimate protection
- 20 amp @ 12-24V DC
- Split pin terminals

82-1027 2 Pole

82-1025 4 Pole



82-1025

7-Way System Checker

- Solid brass pin
- LED light source
- Lexan housing
- North American

920273



920273